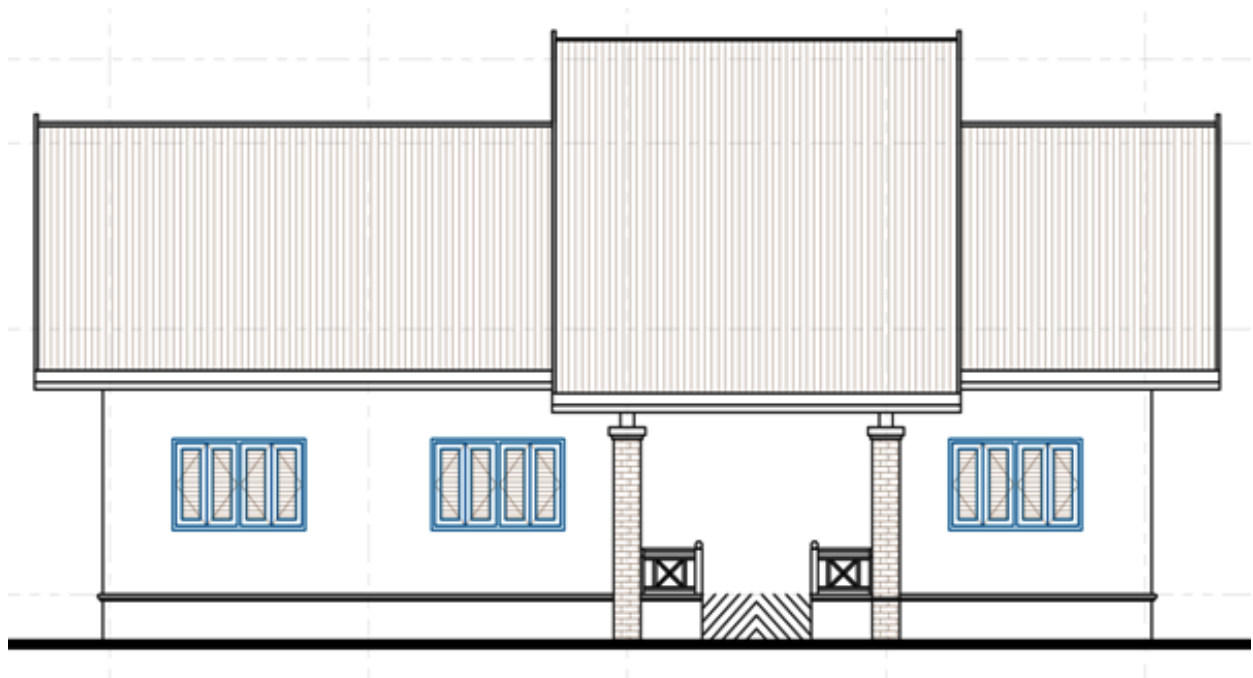


Lao People's Democratic Republic
Peace Independent Democracy Unity Prosperity

Oudomxay Province
Oudomxay Provincial Health Department

Oudomxay, date...29 MAR 2016

**Project Proposal for Constructing
a Health Center
For Namphouan Region of Houn district
Oudomxay Province, Lao PDR.**



A Project Fund and Implement by:
Amitiés Luxembourg-AmériqueLatinea.s.b.l
In Association with L' Association Peuples et Montagnes du Mékong (PEMM)
and Villagers of Namphouan

Surveyed, Designed and Approved by Engineers of Houn District Public Health Office

March 2016

I. BACKGROUND INFORMATION

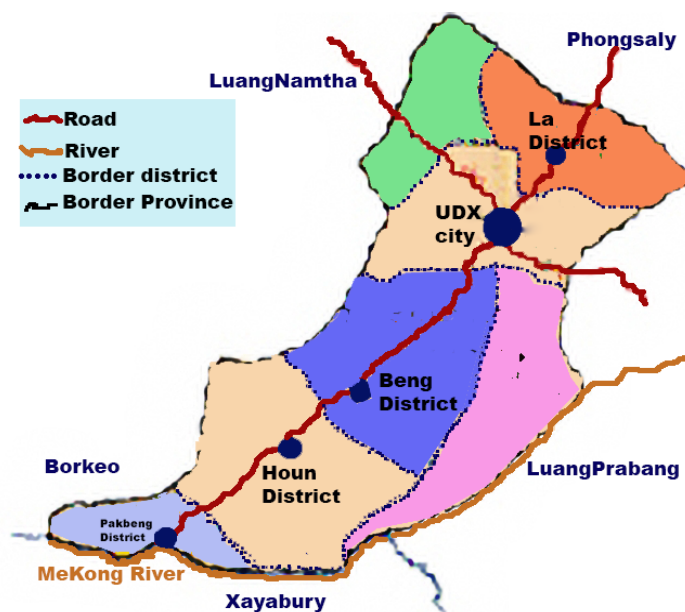
The health care in rural area is a major problem for the Ministry and Department of Health, especially regarding expectant mother and pediatric services. Many patients have not yet received treatment in highly remote areas such as in the Northern Provinces of Laos. Accessing healthcare services include the following major barriers:

- Limitation of government funds allocated to obstetric and pediatric care in remote area.
- Limitation of education and medical instruments for obstetric and pediatric care on a health center and district levels.
- Distance and limited accessibility to hospitals.
- Travel to provincial hospitals is unaffordable for many villagers.
- Limited patient awareness of the availability of primary obstetric and pediatric care.
- Continued practice of traditional medicine

Houn district is one of 7 districts of ODX province, it is located at 92 km from ODX capital. The district is one of 3 Southern districts of ODX province. There are 93 villages, the population numbers 71,298 people (2014), it includes 68% LaoTheung (Khamou), 21% LaoLoum and 11 % LaoSoong (Hmong).

The economy is mainly agricultural and farming.

Health care in Houn district is provided by 9 health centers covering 93 villages.



Namphouan region village is the 1 of 10 regions of Houn district it covers 4 villages with a catchment population of 1,767. It includes LaoLoum 2 villages, Khmou 2 villages, 95% of the land is in high mountains.

The Namphouan is located at 40 Km of dirt road from Road 13 in Houn district, Oudomxay province.

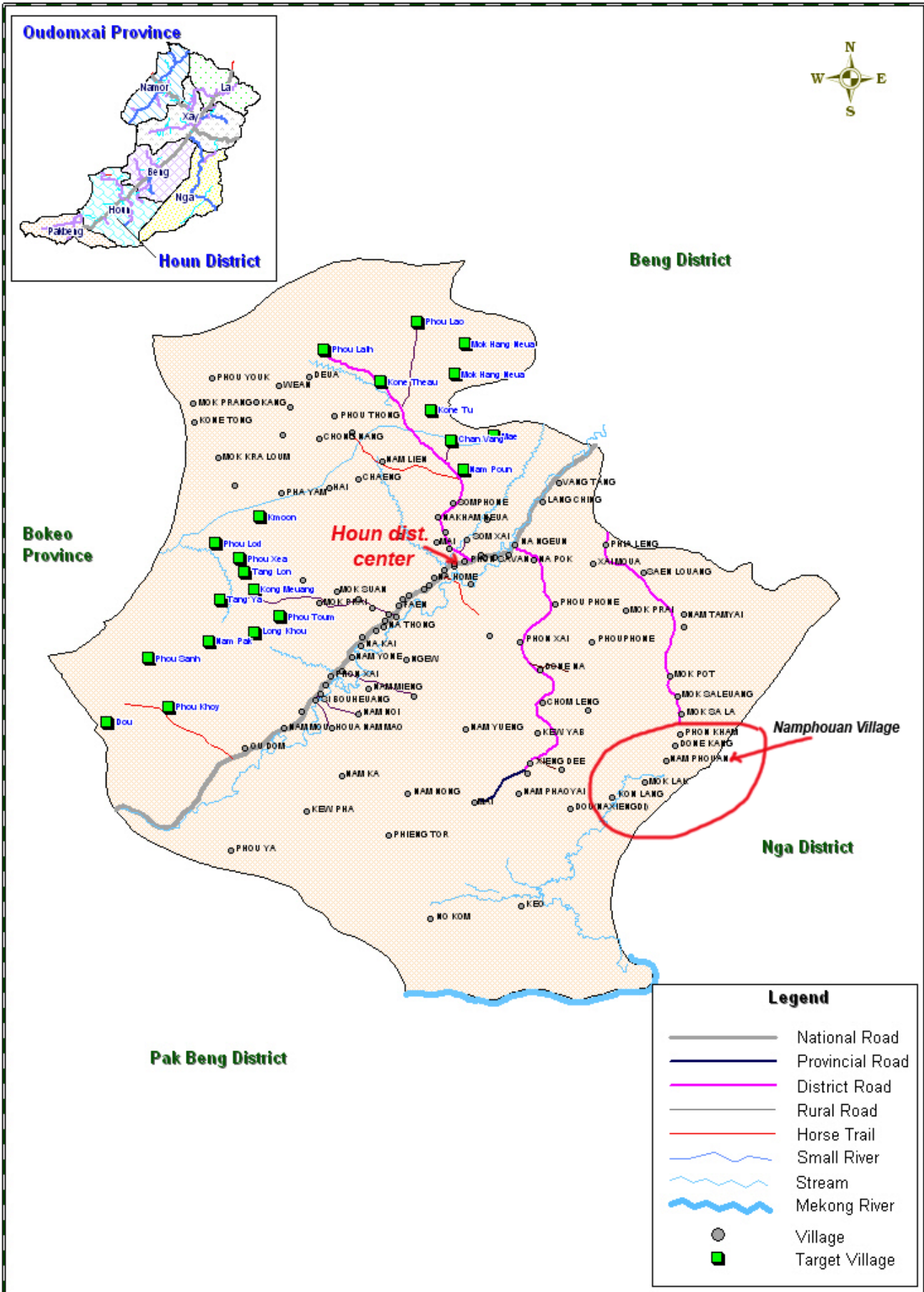
People are generally poor, the economy is mainly agricultural, growing corn in dry fields and raising livestock. Namphouan region village is populated by 2 ethnic groups, Leua and Khmou, each with their own identity, culture, traditions, costumes and languages.

Education: there is a primary school with 120 students and a secondary school with 48 students.

Transportation, view on the way for health center



Map of Houn District



The health care at Namphouan village has old one health center that was constructed in 1996 that was fund by ADB. There are 5 nurses at the health center, the main activities of the health centers are disease prevention, health education, vaccine injections, dispensing vitamin A and parasite medication, providing basic treatment and referring difficult cases to the district hospitals.

Statistic services in 2013-2015

Service	2013	2014	2015	Remark
OPD	644	897	966	
Patient in ward	19	34	98	
Delivery	28	36	51	
Refer	7	13	17	

Unfortunately:

- During the rainy season the water is flooding, dirty the patients could not be serviced.
- The building (examine room, ward) is old, broken that has a problem of working and service.
- No dormitory for staff who are from other districts

Beginning in 2012, in cooperation with Oudomxay Hospital, the L'association **Peuples et Montagnes du Mékong**, funded several missions for human resource development for local medical doctors and nurses to improve health care at provincial and district hospitals level, has provided mobile health care in remote areas of the health centers and also provided fund the Sustainable Comprehensive Water Project for Sibounheuang health center of Houn district.

This health center construction Project is important and necessary for the continued success of preventive healthcare to decrease the maternal, infant and child mortality rate in remote area.

This Project is a partnership between the Oudomxay Provincial Public Health Dept., in cooperation with the L'association **Peuples et Montagnes du Mékong** and **Amitiés Luxembourg-AmériqueLatinea.s.b.l**

II. OBJECTIVE

To improve the health care, living conditions and the overall health of people in remote villages by giving them easy access to new health care center.

III. PARTNERS

Country Level: Ministry of Health, Dept. of Curative

Provincial Level: Dept. of Oudomxay Provincial Public Health

District Level: Dept. of Houn District Public Health

Village Level: Head of Village, Head of Youth and Villagers

IV. BUILDING MATERIALS

All building materials used for the construction of this project were of good quality obtained from one of **three bidding companies**.

Framing wood for the construction of concrete reservoirs and labor was provided by the village.

V. ACTIVITIES PERFORM

1. Preparation

Cooperate with PEMM, Ministry of Health, Provincial, District and Village levels. Site surveyed on January 11, 2016 by teamwork of Houn District Public Health and Dr. Phetsamone Indara (assistant coordinator of PEMM)

2. Construction

Work will start on May 2016 to October 2016 under the management of the engineer of Oudomxay Provincial Public Health Dept., Houn District and Project Manager of PEMM. There are 120 villagers will participate to the construction effort.

There are 8 phases of construction:

- 1) Earth work
- 2) Concrete work
- 3) Masonry and plastering works
- 4) Roofing work
- 5) Doors, windows and shutters installation works
- 6) Electrical and Air conditioning works
- 7) Plumbing, sanitary and ceramic works
- 8) Painting and Drainage system works

(Plan detail on attached files)

VI. BUDGET AND EXPENDITURE

The estimate budget for this project is **120,342.00 USD** (one hundred twenty thousand three hundred forty two USD). The cost of the project will fund by PEMM in the amount of **\$113,121.00** (94%) and by the local community in the amount of **\$7,221.00** (6%). That includes:

- Health center building:	\$64,564
- Dormitory building:	\$33,598
- Toilet:	\$8,055
- Kitchen room:	\$4,902
- House for burn garbage:	\$3,529
- Storage water tank:	\$5,695

(BoQ detail on attached files)

VII. EXPECTED OUTCOME

- The project will be bringing health center to a population of over 1,700 Leua and Khamou people in these remote villages.
- Will improve quality of service for patients as women and children.
- Treatment for poor patients who otherwise would not receive help.
- Decrease maternal, infant and child mortality rate in Oudomxay province.
- Improve health and social development of poor people in remote area.

Planner



ດຣ. ພັດສະໝອນ ອິນດາລາ
Phetsamone INDARA, MD.

Assistant Coordinator of PEMM

Tel/Fax: +856-81-212947

Cell phone: +856-20-22203708

Email: inda_oph@yahoo.com

ATTACHMENT

1. Photo of village
2. Photo of old health center
3. Plan of new Project
4. BoQ